



LED LIGHTING SOLUTIONS

Revolutionary Concepts For Shipboard Lighting

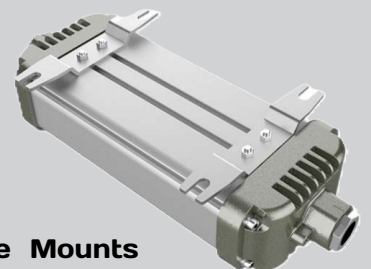
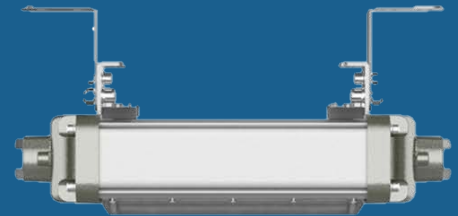
LLS COMX12 - 12" LED Linear Marine Fixture



Model No. *LLS-COMX12*

Product Features

- 120/277VAC 50/60Hz
- Power Options: 20 & 30 Watts
- 120lm/w
- 2,400 - 3,600 Lumens
- IP66
- Beam Angle: 110 Degrees
- Working Temperature: -20~+40 C
- 4000 or 5000K
- 100,000 Hours
- Weight: 3.75lbs
- Dimensions: 13" x 4.9" x 3.03"
- Die Cast Aluminum, Stainless Steel Hardware
- Corrosion (WF2) & Impact Resistance
- Water and Dust Proof
- Adjustable/Sliding Brackets
- T5 or Better



Adjustable Mounts



LED LIGHTING SOLUTIONS

Revolutionary Concepts For Shipboard Lighting

LLS-COMX12 FIXTURE CONFIGURATIONS

LLS-COMX12- _____ - _____ - LV- VM

20(Watt) 40 (Kelvin)

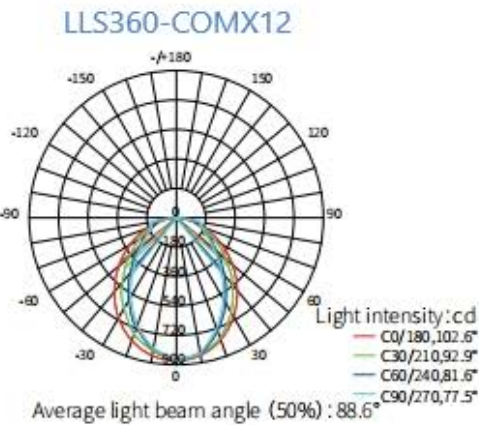
30(Watt) 50 (Kelvin)

CONFIGURATION EXAMPLE

Part No. LLS-COMX12-20-40-LV-VM

Description LLS LED 12' Linear, 20Watt, 4000K, 120/277VAC, Adjustable Vessel Mount

Light Distribution



LLS-COMX12 Dimensions

