



LED LIGHTING SOLUTIONS

Revolutionary Concepts For Shipboard Lighting

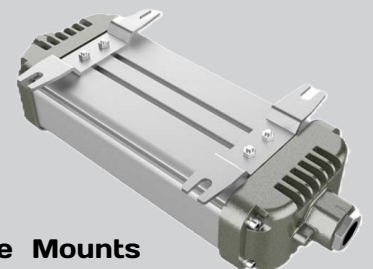
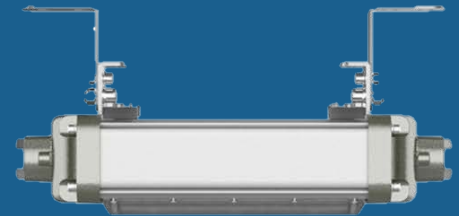
SSL 100 SERIES - 12" LED Linear Marine Fixture



Model No. SSL-100 SERIES

Product Features

- 120/277VAC 50/60Hz
- Power Options: 20 & 30 Watts
- 120lm/w
- 2,400 - 3,600 Lumens
- IP66
- Beam Angle: 110 Degrees
- Working Temperature: -20~+40 C
- 4000 or 5000K
- 100,000 Hours
- Weight: 3.75lbs
- Dimensions: 13" x 4.9" x 3.03"
- Die Cast Aluminum, Stainless Steel Hardware
- Corrosion (WF2) & Impact Resistance
- Water and Dust Proof
- Adjustable/Sliding Brackets
- T5 or Better



Adjustable Mounts

©LEDLIGHTINGSOLUTIONS

DIRECT.Info@1LLS.com

OFFICE.855.309.1702 FAX.941.296.7313

WWW.LEDLIGHTINGSOLUTIONS.COM

All rights reserved. LED Lighting Solutions reserves the right to change specifications for product improvement without prior notice.



LED LIGHTING SOLUTIONS

Revolutionary Concepts For Shipboard Lighting

LLS-COMX12 FIXTURE CONFIGURATIONS

SSL-100- _____ - _____ - LV- VM

20(Watt) 40 (Kelvin)

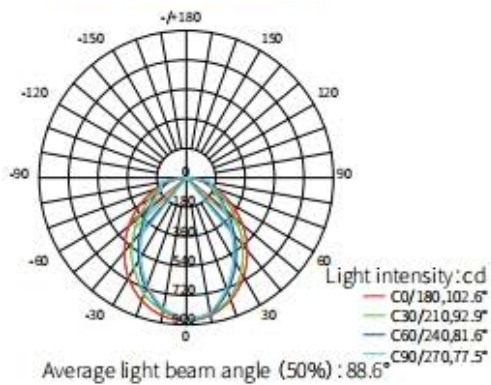
30(Watt) 50 (Kelvin)

CONFIGURATION EXAMPLE

Part No. SSL-100-20-40-LV-VM

Description LED 12' Linear, 20Watt, 4000K, 120/277VAC, Adjustable Vessel Mount

Light Distribution



SSL-100 Series Dimensions

