



LED LIGHTING SOLUTIONS

Revolutionary Concepts For Shipboard Lighting

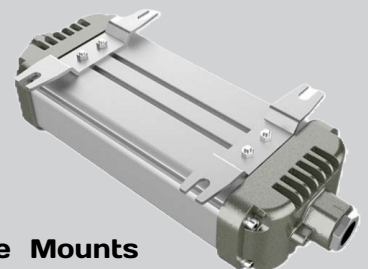
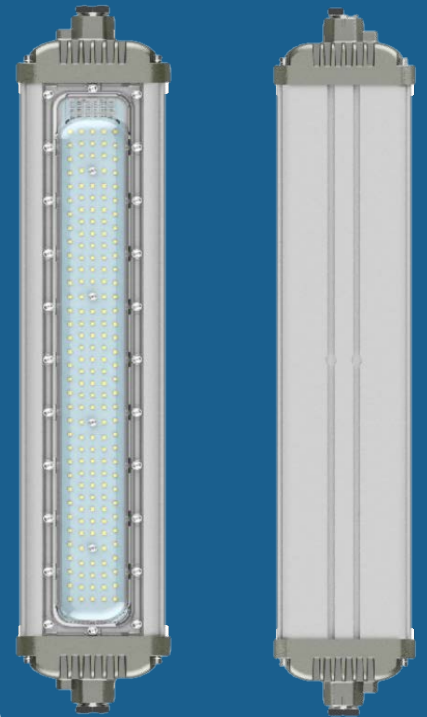
LLS360[®] COMX24 - 2' LED Linear Marine Fixture



Model No. **LLS360-COMX24**

Product Features

- 120/277VAC 50/60Hz
- Power Options: 20/40/60Watts
- 120lm/w
- 2,400 - 4,800 - 7,200 Lumens
- IP66
- Beam Angle: 110 Degrees
- Working Temperature: -20~+40 C
- 4000 or 5000K
- 100,000 Hours
- **Weight: 7lbs**
- Dimensions: 25" x 4.92" x 3.02"
- Die Cast Aluminum, Stainless Steel Hardware
- Corrosion (WF2) & Impact Resistance
- Water and Dust Proof
- Adjustable/Sliding Brackets
- T5 or Better



Adjustable Mounts

©LEDLIGHTINGSOLUTIONS

DIRECT.Info@1LLS.com

OFFICE.855.309.1702 FAX.941.296.7313

WWW.LEDLIGHTINGSOLUTIONS.COM

All rights reserved. LED Lighting Solutions reserves the right to change specifications for product improvement without prior notice.



LED LIGHTING SOLUTIONS

Revolutionary Concepts For Shipboard Lighting



LLS360-COMX24 FIXTURE CONFIGURATIONS

LLS360-COMX24- _____ - _____ - LV- VM

20(Watt) 40 (Kelvin)

40(Watt) 50 (Kelvin)

60(Watt)

CONFIGURATION EXAMPLE

Part No. LLS360-COMX24-40-40-LV-VM

Description LLS360 LED 2' Linear, 40Watt, 4000K, 120/277VAC, Adjustable Vessel Mount

Light Distribution

LLS360-COMX24 Dimensions

LLS360-COMX24

